



## Community Newsletter – January 2025

To kick things off I would like to wish everyone a Happy New Year. For me, I very much see this as a year for positive change and with your help that's what we will be striving hard to achieve!

I would like to begin by reminding everyone that the window has not yet closed for people to write and submit objection letters to the Lagan Homes outline planning application for 470 houses on the fields either side of Burroughs Road.

Hopefully the recent flood event in the village serves as a stark reminder as to the impact changes in the climate and weather patterns are having, and this is before any of the 225 houses on Desford lane and the 75 house at the top of Markfield Lane have been started.



Now imagine the catastrophic effects this village will face when building does start on those houses already approved, and then even worse if the Lagan Homes application gets approved!

100's of acres of farmland that surround and protect the village will be concreted over for housing. The land itself lies 115m above sea level, the lowest point in the village is 89m above sea level. The last photo shows flooding in the fields off Burroughs Road caused by run off from the 95 Houses under construction by Lagan Homes off Markfield Road.

**Q. What way does water run?**

The issues are real and the risk to life is high. This is not just about flooded roads, the future risk is damage to homes and businesses as well as to our already old and weak utility infrastructure. It also poses a real threat to life, and I am aware of the heroic care companies performed in getting carers out to customers to provide essential and time critical services including administering medication on the day.



**Two recent pictures of the stunning fields we will lose forever if we do not act now!**

Prior to Christmas our magnificent team of volunteers went calling door to door in the village to deliver letter templates and objection guides on as many roads as possible.

Many of you said you would write letters and submit them direct to HBBC by post and by email, I really hope you have been able to just that, every letter really does count!

If you have not yet written your letters, please, please do so, details of how to do it are as follows

- Copies of the letter template and objection guide can be found on the Ratby Parish Council website [www.ratbyparishcouncil.org.uk](http://www.ratbyparishcouncil.org.uk) and the Rise for Ratby Website [www.riseforratby.org.uk](http://www.riseforratby.org.uk) (they are available in both Microsoft Word and PDF formats.)
- Copies of both the letter and objection guide can also be picked up in the Library and In the Parish Council Office as previous and completed letters can also be left at both locations for us to submit on your behalf.
- Residents can also send objections by email to [Alex.jelley@hinckley-bosworth.gov.uk](mailto:Alex.jelley@hinckley-bosworth.gov.uk) – Re: Lagan Homes Outline Planning Application, ref: 24/00914/OUT

If you need help or have any questions, please get in touch via the Rise for Ratby website [www.riseforratby.org.uk](http://www.riseforratby.org.uk) and please do not forget to register at the foot of the home page, you will get regular updates and news direct to you email.

Ozzy O'Shea our County Councillor for highways and flooding has kindly offered to take me into HBBC early next week so we can hand deliver the hundreds of letter you have dropped in at the Parish Offices and the Library, I will also be trying to establish how many other responses they have received direct from residents to gauge our overall response to date.



# Install a Pedestrian Crossing on Desford Lane Ratby for Safe Access to Doctors Surgery!

If you have not yet done so, please sign the petition being run by Ozzy O'Shea our hard-working County Councillor – this is an urgent matter that will help save lives !

We need over 1000 signatures to take this to the Council – we have approx. 750!



**Click the link below to sign the petition**

<https://www.change.org/Desford-Lane-Doctors-Crossing>

**or**

**Scan the QR code to sign the petition.**



You can also sign the hard copy petition sheets which are in shops and businesses all over the village – including the CO-OP, Post Office, Village Hall, the Library and the Pharmacy etc.

# Ferndale Park Survey.

Late last year you may recall we ran a survey on the Rise for Ratby website and Facebook groups asking residents on their opinions of Ferndale Park, the summary results are detailed below, and I would like to thank everyone who took the time to participate, the comments and suggestions clearly show what people think is important for this valuable recreational area.

A team representing Rise for Ratby, presented the results and feedback to the Parish Council at one of their monthly meetings.

The Parish council welcomed the feedback from the community and because of the survey and overall feedback from the community they are now working on number of exciting initiatives focused on improving and protecting wildlife habitat, as well as looking at ways of improving equipment and facilities for adults and inclusive users to name but a few.

Please keep close eye out on the Parish Council Website for updates and news in the coming weeks!

[www.ratbyparishcouncil.org.uk](http://www.ratbyparishcouncil.org.uk)

We will also bring you the news and updates as they happen.

[www.riseforratby.org.uk](http://www.riseforratby.org.uk)

Register your details at the foot of the homepage to make sure you do not miss a thing!

## Ferndale Park survey

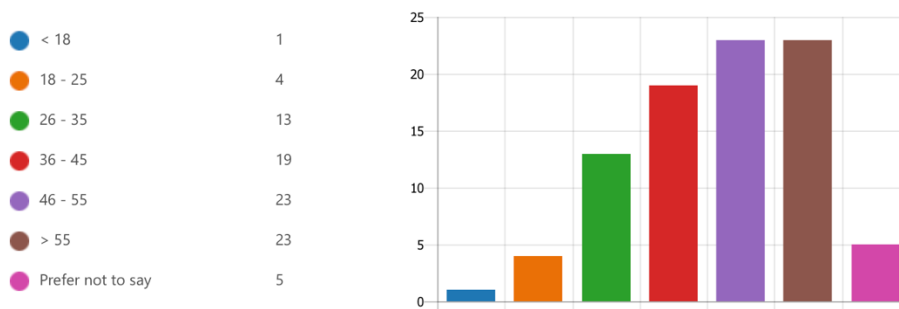
88 Responses   04:09 Average time to complete   Active Status

### 1. What is your gender?

Woman	61
Man	22
Non-binary	0
Prefer not to say	4



2. How old are you?



3. What do you use Ferndale Park for at the moment?

88 Responses

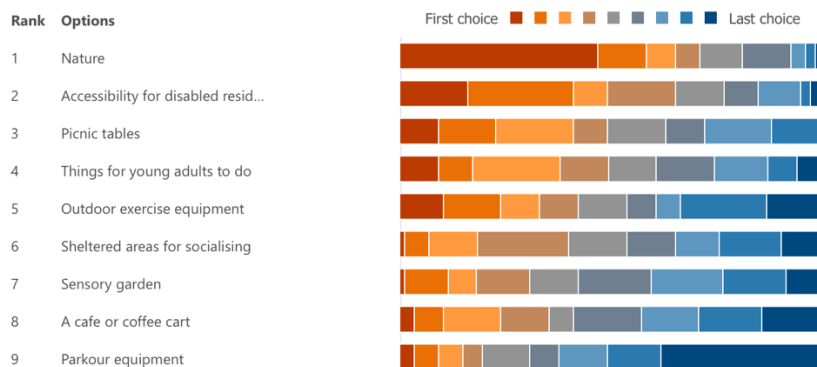
Latest Responses  
*"Walking my dog "*  
*"Walking "*  
*"Walking dogs, entertaining Grand kids."*

5. What would you like to see at Ferndale Park?

88 Responses

Latest Responses  
*"It kept clean and tidy"*  
*"Nothing "*  
*"More seating perhaps, places you can picnic"*

6. Rank these in order of importance to you.



7. Would you like to add anything else?

33 Responses

Latest Responses  
*"None "*

4. What frustrates you about Ferndale Park?

88 Responses

Latest Responses  
*"Dog poo not being picked up and sometimes broken glass. Rude a..."*  
*"Liter"*  
*"Nothing really"*

# Local Groups and Businesses

Since starting this group up, I have been fortunate to meet many hardworking and talented people ....and they all live in Ratby!

We are blessed to have so many groups and businesses some of which I did not know even existed and I think you all will be surprised as well! They all add value to the community we live in and during 2025 I aim to run regular “spotlight” articles to promote them by telling you more about what they do and what they offer and to hopefully encourage us all to use them.

If you run a local group, business, organisation or activity and you would like to tell the community more about it, get in touch via the website!

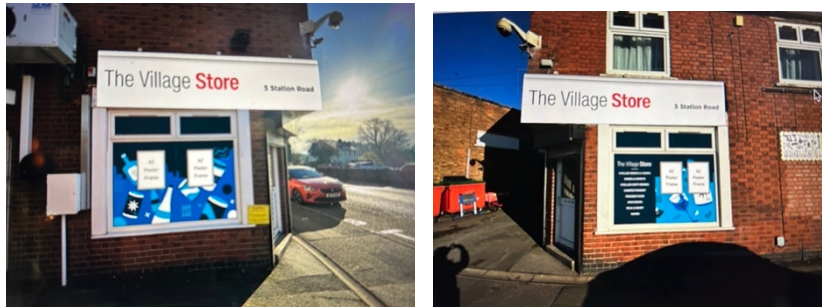
[www.riseforratby.org.uk](http://www.riseforratby.org.uk)

We have new village shop which has been set up by Ram Shiva who you may also know as he runs the Post Office.

The shop is based where the old DIY shop was based next door to Venture Studios on Station Road.

The shop is open for trading now but there is to be a grand opening on 31<sup>st</sup> January 2025 once the new signage is installed and the fit out is complete.

Ram has sent me a mock-up of what the store will look like, more details on the opening will follow!



Shop local and support local businesses ! Good luck Ram!

Thank you and well done for getting through to the end of the newsletter, I hope there was something of interest for everyone.

Take care

Phil